

## **Audi Piloted driving**

Bil Sweden 11 maj

Irene Bernald, Informations- och PR-chef

# Varför automatiserad körning?

**1** Enhanced safety



Eco-friendly driving **2**



**3** More comfort for the customer



Efficient use **4**  
of the transportation infrastructure



Piloted  
driving

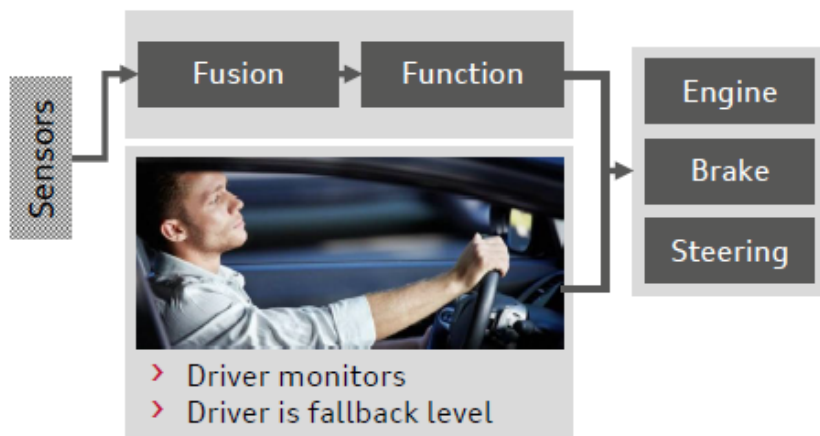
## På god väg - omfattande utbud av assistanssystem redan idag

- » Hold assist
  - » Audi pre sense basic
  - » Audi pre sense city
  - » Park assist rear
  - » Adjustable speed limiter
  - » Cruise control
  - » Break recommendation
  
  - » Turn assist left
  - » Adaptive cruise control
  - » Audi active lane assist
  - » Audi pre sense front
  - » Obstacle avoidance assist
  - » Camera based traffic sign recognition
  - » Predictive efficiency assistant
  - » **Traffic jam assist**
- » Audi side assist
  - » Exit warning
  - » Audi pre sense rear
  - » Park assist plus
  - » Rear cross-traffic assist
  - » Reversing camera
  - » Trailer assist
  
  - » Main beam assist
  - » MMI navigation plus with MMI Touch
  - » Night vision assistant
  - » Surrounding camera
  - » Park assist



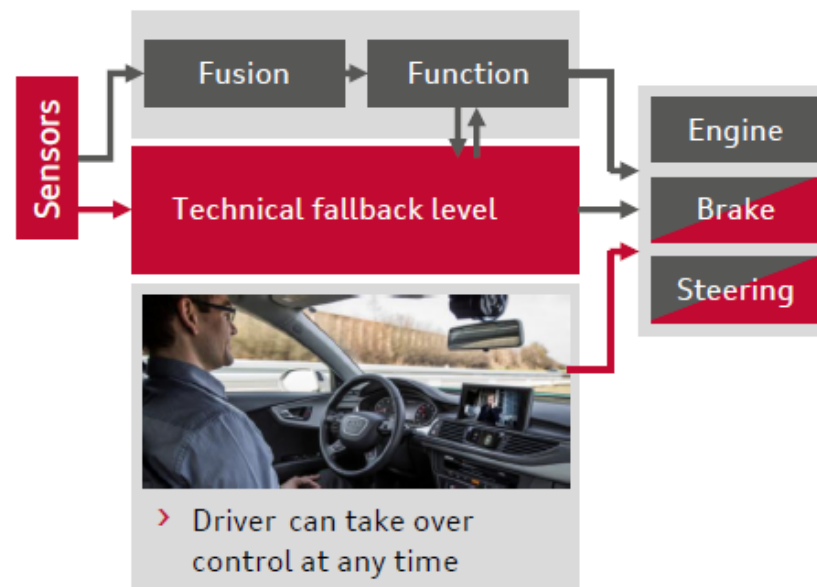
# Automatiserad körning kräver redundans - både hängslen och livrem

## Assisted driving

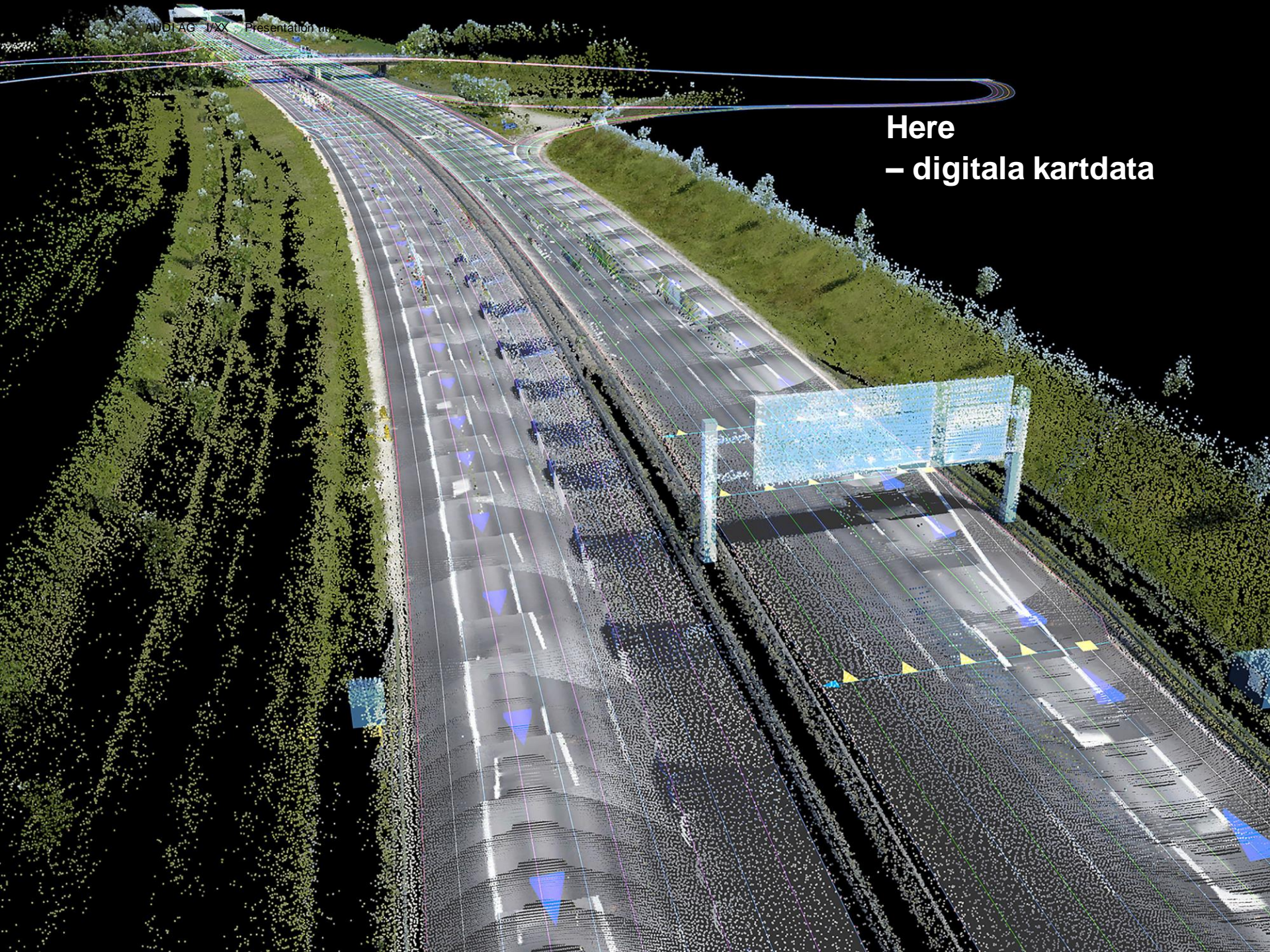


» In critical situations, immediate driver reaction is required

## Piloted driving

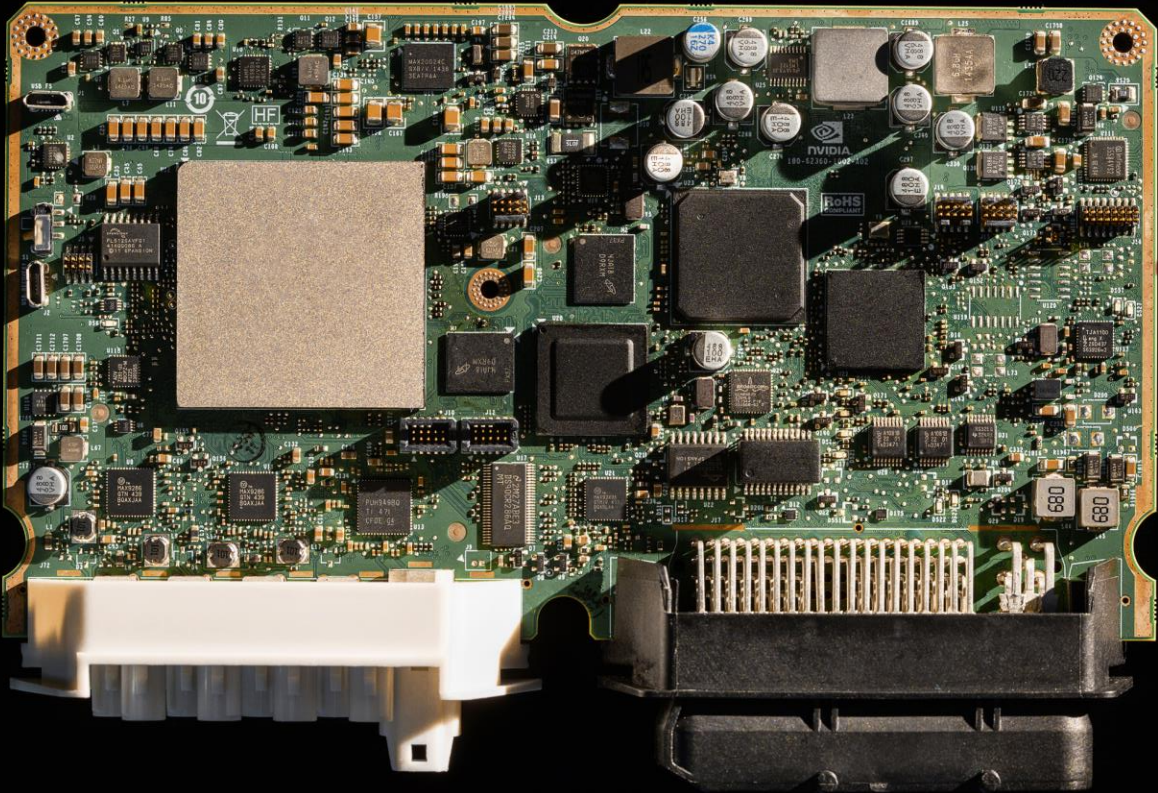


» No immediate driver reaction required



**Here**  
**- digitala kartdata**

zFAZ





Teststräcka Autobahn A9

# En evolutionär utveckling

